

Med & Care



BP Med & Care®:

Because everybody is different.

COLLECTION OVERVIEW

BP Med & Care[®]. Because everyone is different.



Everything for your comfort.



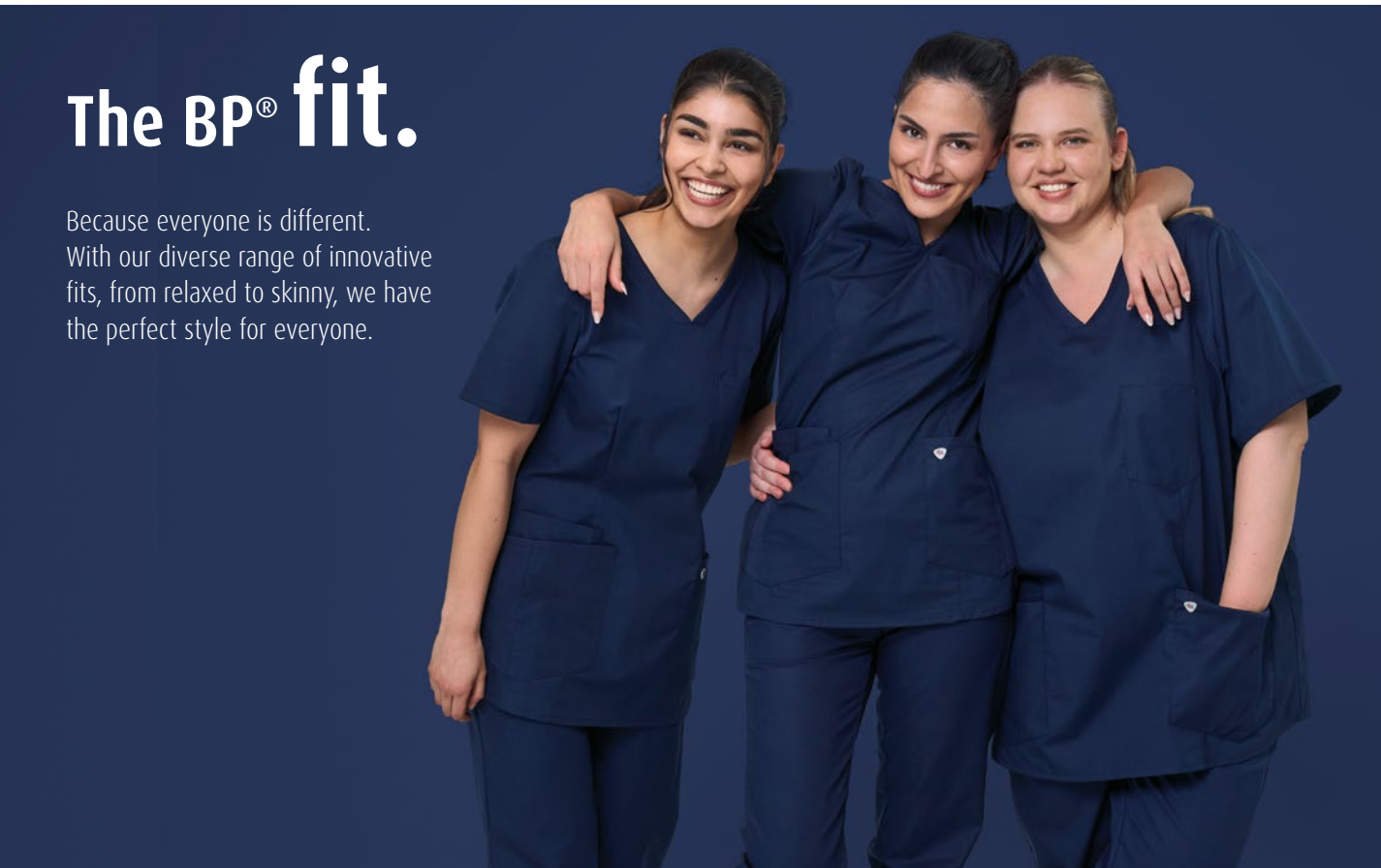
Our clothing is not just breathable – it's as light as a feather, for wear comfort that lasts all day.



Freedom of movement.

With innovative stretch materials and elastic inserts, we offer an incomparable wear experience. The ergonomic cut will never restrict you or let you down.

STRETCH



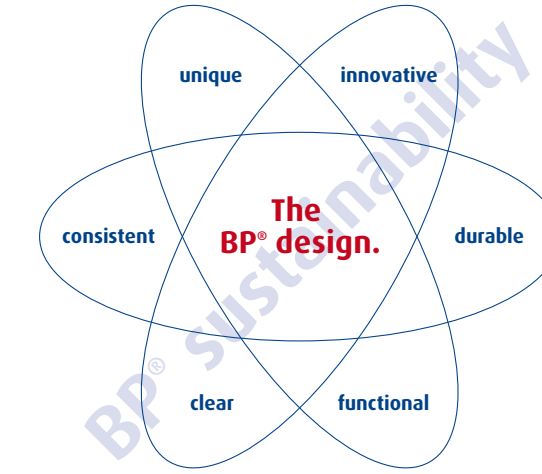
The BP® fit.

Because everyone is different. With our diverse range of innovative fits, from relaxed to skinny, we have the perfect style for everyone.



The BP® design.

Functionality meets professional design. Our clothing doesn't just offer outstanding comfort and reliability – it ensures that you look the part and exude confidence in your work as a healthcare professional.



The perfect complement: BP® circular poloshirts.

Discover the future with our circular-economy polo shirts: textiles with a 10% recycled production waste content, buttons made from recycled cotton and yarns made from recycled polyester.



Sustainability and durability thanks to BP® quality.

Eliminate, reduce, recycle – for us these are not just words but our guiding principles for sustainability.

Our priority is quality and as a leading member of the Fair Wear Foundation, we are also actively committed to fair working conditions and a fair wage.



Women

BP® ModernFit

1738 BP® Women's casual tunic
Sizes XS-3XL
110: sizes XS-4XL
Slip-on tunic
50% cotton/50% polyester, approx. 180 g/m²

1750 BP® Women's casual tunic
Sizes XS-3XL
With press studs
50% cotton/50% polyester, approx. 180 g/m²

1740 BP® Women's slip-on tunic
Sizes XS-3XL
Slip-on tunic
50% cotton/50% polyester, approx. 180 g/m²

1762 BP® Lightweight women's slip-on tunic
Sizes XS-3XL
0110: sizes XS-4XL
Slip-on tunic
49% cotton/48% polyester/3% elastolefin, approx. 150 g/m²

1764 BP® Lightweight women's tunic
Sizes XS-3XL
0110: sizes XS-4XL
With press studs
49% cotton/48% polyester/3% elastolefin, approx. 150 g/m²

1708 BP® Lightweight women's slip-on tunic
0188 and 0116: sizes XS-3XL
0110: sizes XS-4XL
Slip-on tunic
49% cotton/48% polyester/3% elastolefin, approx. 150 g/m²

1710 BP® Lightweight women's tunic
0188 and 0116: sizes XS-3XL
0110: sizes XS-4XL
With press studs
49% cotton/48% polyester/3% elastolefin, approx. 150 g/m²

1700 BP® Women's slip-on tunic
Sizes XS-3XL
Slip-on tunic
50% cotton/50% polyester, approx. 215 g/m²

1600 BP® Women's tunic
Sizes XS-3XL
With press studs
50% cotton/50% polyester, approx. 215 g/m²

1702 BP® Women's tunic
Sizes XS-3XL
With press studs
50% cotton/50% polyester, approx. 215 g/m²

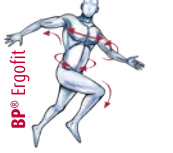
STRETCH

The high stretch content provides great comfort and optimum freedom of movement.



Super-lightweight fabrics - for you and everyone who is constantly on the go in warm environments.

The ergonomic cut of your work clothing guarantees maximum freedom of movement and perfect wear comfort.



Clothes that feel like a second skin thanks to elastic, climate-regulating piqué inserts on the sides and back.

Easy-care materials that retain their shape even after frequent washing, so that you always look good at work. All of our Med & Care garments share these properties.



EasyCare

Unisex

BP® ModernFit

1739 BP® Unisex casual tunic
Sizes XS-3XL
110: sizes XS-4XL
Slip-on tunic
50% cotton/50% polyester, approx. 180 g/m²

1741 BP® Unisex slip-on tunic
Sizes XS-3XL
Slip-on tunic
50% cotton/50% polyester, approx. 180 g/m²

1763 BP® Lightweight unisex slip-on tunic
Sizes XS-3XL
0110: sizes XS-4XL
Slip-on tunic
49% cotton/48% polyester/3% elastolefin, approx. 150 g/m²

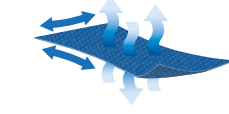
1765 BP® Lightweight unisex tunic
Sizes XS-3XL
With press studs
49% cotton/48% polyester/3% elastolefin, approx. 150 g/m²

1713 BP® Lightweight unisex slip-on tunic
0188 and 0116: sizes XS-3XL
0110: sizes XS-4XL
Slip-on tunic
49% cotton/48% polyester/3% elastolefin, approx. 150 g/m²

1701 BP® Unisex slip-on tunic
Sizes XS-3XL
Slip-on tunic
50% cotton/50% polyester, approx. 215 g/m²

1703 BP® Unisex tunic
Sizes XS-3XL
With press studs
50% cotton/50% polyester, approx. 215 g/m²

STRETCH



Clothes that feel like a second skin thanks to elastic, climate-regulating piqué inserts on the sides and back.

Easy-care materials that retain their shape even after frequent washing, so that you always look good at work. All of our Med & Care garments share these properties.



EasyCare

Women

BP® SkinnyFit

1770 BP® Stretch women's skinny jeans
Sizes 28/32-32/32
65% cotton/30% polyester/5% elastane, approx. 260 g/m²

1767 BP® Stretch women's shape fit skinny
Sizes 30-30
65% cotton/30% polyester/5% elastane, approx. 260 g/m²

1755 BP® Stretch women's slim-fit jeans
Sizes 28/30-33/30, 26/32-38/32, 28/34-34/34
65% cotton/30% polyester/5% elastane, approx. 260 g/m²

1732 BP® Stretch women's jeans
Sizes 28/30-33/30, 26/32-38/32, 28/34-34/34
55% cotton/42% polyester/3% elastolefin, approx. 300 g/m²

1768 BP® Lightweight stretch women's jeans
Sizes 28/30-33/30, 26/32-38/32, 28/34-34/34
48% cotton/48% polyester/4% elastolefin, approx. 200 g/m²

1734 BP® Women's chinos
686: Sizes 34-52, 34-54, 34-56
48% cotton/48% polyester/4% elastolefin, approx. 230 g/m²
130: Sizes 34-52, 34-54, 34-56
100% cotton, approx. 205 g/m²

1736 BP® Stretch women's casual trousers
311: Sizes 34-56
65% cotton/30% polyester/5% elastane, approx. 260 g/m²
334: Sizes 36-56, 34-56
40% cotton/35% polyester/25% elastomultiester, approx. 240 g/m²

1766 BP® Stretch women's shape fit trousers
Sizes 34-58, 38-46
48% cotton/48% polyester/4% elastolefin, approx. 230 g/m²

1644 BP® Stretch women's trousers
White: sizes 34-54, 32-58, 34-54
Black: sizes 34-54, 34-54
49% cotton/48% polyester/4% elastolefin, approx. 230 g/m²

1642 BP® Stretch women's jeans
White: sizes 34-54, 34-56
48% cotton/48% polyester/4% elastolefin, approx. 230 g/m²

1662 BP® Stretch women's jeans
White: sizes 34-54, 34-56
Black: sizes 34-54, 34-54
48% cotton/48% polyester/4% elastolefin, approx. 230 g/m²

1647 BP® Women's trousers
Sizes 34-52, 34-58, 34-52
65% polyester/35% cotton, approx. 215 g/m²

BP® SlimFit

1756 BP® Stretch men's slim-fit jeans
Sizes 29/32-40/32, 31/34-38/34
65% cotton/30% polyester/5% elastane, approx. 260 g/m²

1733 BP® Stretch men's jeans
Sizes 29/32-40/32, 31/34-38/34
55% cotton/42% polyester/3% elastolefin, approx. 300 g/m²

1769 BP® Lightweight stretch men's jeans
Sizes 29/32-40/32, 31/34-38/34
48% cotton/48% polyester/4% elastolefin, approx. 200 g/m²

1735 BP® Men's chinos
686: Sizes 48-56, 44-60, 48-54
48% cotton/48% polyester/4% elastolefin, approx. 230 g/m²
130: 100% cotton, approx. 205 g/m²

1737 BP® Stretch men's casual trousers
311: 65% cotton/30% polyester/5% elastane, approx. 260 g/m²
334: 40% cotton/35% polyester/25% elastomultiester, approx. 240 g/m²

1756-311-0021 White
1756-311-0032 Black

1733-687-21 White
1769-684-0032 Black
1735-686-21 White
1735-686-56 Anthracite
1735-686-32 Black

1737-334-0021 White
1737-334-0056 Anthracite

1756-311-0021 White
1756-311-0032 Black

1733-687-21 White
1769-684-0032 Black
1735-686-21 White
1735-686-56 Anthracite
1735-686-32 Black

1737-334-0021 White
1737-334-0056 Anthracite

BP® RegularFit

1644 BP® Stretch women's trousers
White: sizes 34-54, 32-58, 34-54
Black: sizes 34-54, 34-54
49% cotton/48% polyester/4% elastolefin, approx. 230 g/m²

1642 BP® Stretch women's jeans
White: sizes 34-54, 34-56
48% cotton/48% polyester/4% elastolefin, approx. 230 g/m²

1662 BP® Stretch women's jeans
White: sizes 34-54, 34-56
Black: sizes 34-54, 34-54
48% cotton/48% polyester/4% elastolefin, approx. 230 g/m²

1647 BP® Women's trousers
Sizes 34-52, 34-58, 34-52
65% polyester/35% cotton, approx. 215 g/m²

1756-311-0021 White
1756-311-0032 Black

1733-687-21 White
1769-684-0032 Black
1735-686-21 White
1735-686-56 Anthracite
1735-686-32 Black

1737-334-0021 White
1737-334-0056 Anthracite

1644-686-21 White
1644-686-32 Black
1642-686-21 White
1642-686-32 Black
1662-686-21 White
1662-686-32 Black
1647-400-21 White

BP® RelaxedFit

1368 BP® Stretch men's trousers
White: sizes 48-52, 44-50, 44-54
Black: sizes 48-52, 44-50, 44-54
48% cotton/48% polyester/4% elastolefin, approx. 230 g/m²

1658 BP® Stretch men's jeans
Sizes 48-58, 44-50, 44-54
48% cotton/48% polyester/4% elastolefin, approx. 230 g/m²

1669 BP® Stretch men's jeans
Sizes 44-54, 44-54, 44-54
48% cotton/48% polyester/4% elastolefin, approx. 230 g/m²

1359 BP® Men's trousers
130: sizes 48-58, 44-54, 44-54
558: sizes 48-62, 44-50, 44-54
686: sizes 48-62, 44-50, 44-54

1645 BP® Unisex trousers, white
130: sizes XS-3XL, S1-2XL
400: sizes XS-3XL, XS-3XL, XS1-3XL
485: sizes XS-3XL, XS-3XL, XS1-3XL

1645 BP® Unisex trousers, coloured
400: sizes XS-3XL, XS1-3XL, 65% polyester/35% cotton, approx. 215 g/m²
485: sizes XS-3XL, XS-3XL, 50% cotton/50% polyester, approx. 180 g/m²

1645 BP® Lightweight unisex trousers, coloured
Sizes XS-3XL
50% cotton/50% polyester, approx. 180 g/m²

The BP® fits

- BP® SkinnyFit**
- > Super slim design, with optimum freedom of movement thanks to its cut and the material used
 - > Skin-tight fit
- BP® SlimFit**
- > Very slim design, with optimum freedom of movement thanks to its cut and the material used
 - > Very tight fitting
- BP® RegularFit**
- > Regular design, straight cut
 - > Comfortable and loose fit
- BP® RelaxedFit**
- > Comfortable design, wide cut
 - > Very loose fit

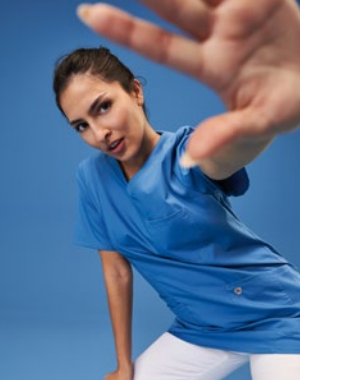


BP® trousers

	Women	Men	Unisex
BP® SkinnyFit			
BP® SlimFit			
BP® RegularFit			
BP® RelaxedFit			

BP® tunic / coats

	Women	Unisex
BP® ModernFit		
BP® RegularFit		
BP® RelaxedFit		



Unisex

BP® RegularFit

1651 BP® Stretch unisex jeans
Sizes XS-3XL, S1-2XL
48% cotton/48% polyester/4% elastolefin, approx. 230 g/m²

1758 BP® Unisex jeans
Sizes XS-3XL, S1-2XL
65% polyester/35% cotton, approx. 245 g/m²

1759 BP® Unisex cargo jeans
Sizes XS-3XL, S1-2XL
65% polyester/35% cotton
White: approx. 215 g/m²
Black: approx. 215 g/m²

1643 BP® Unisex jeans
White: sizes XS-3XL, XS-3XL, XS1-3XL
Black: sizes XS-3XL, XS-3XL, XS1-3XL

BP® RelaxedFit

1641 BP® Unisex jeans
Sizes XS-3XL, S1-2XL
558: 65% polyester/35% cotton, approx. 245 g/m²
400: 100% cotton, approx. 205 g/m²

1641-558-21 White
1641-400-110 Light blue

1646 BP® Unisex trousers
Sizes XS-3XL, XS-3XL, S1-2XL
65% polyester/35% cotton, approx. 215 g/m²

1645 BP® Unisex trousers, white
130: sizes XS-3XL, S1-2XL
400: sizes XS-3XL, XS-3XL, XS1-3XL
485: sizes XS-3XL, XS-3XL, XS1-3XL

1645 BP® Unisex trousers, coloured
400: sizes XS-3XL, XS1-3XL, 65% polyester/35% cotton, approx. 215 g/m²
485: sizes XS-3XL, XS-3XL, 50% cotton/50% polyester, approx. 180 g/m²

1645 BP® Lightweight unisex trousers, coloured
Sizes XS-3XL
50% cotton/50% polyester, approx. 180 g/m²

* white stocks last



BP Med & Care®:
Because everyone is different.

www.bp-online.com

Sustainability through long-lasting quality: this is what drives us at BP® and makes us better every single day.



Learn more about sustainability at BP®.



More about BP®: www.bp-online.com
Subscribe now to our newsletter and learn more about us, our new products and sales promotions as well as special online offers.



Follow us on YouTube

04/2024 © Bierbaum-Proenen GmbH & Co. KG • Domstr. 55-73 • 50668 Köln • Germany • All rights reserved.